



MONMOUTH COLLEGE THEATRE PRESENTS



MARISOL

BY JOSÉ RIVERA

DIRECTED BY

EDRASS CHÁVEZ-ALVARADO '26

SEPTEMBER 26TH-28TH, 2025

FRI & SAT 7:30PM | SUN 2:00PM

HEWES STUDIO THEATER | LOWER LEVEL OF LIBRARY



DIRECTOR'S NOTE

EDRASS CHÁVEZ-ALVARADO '26

I took a class in directing at Monmouth College and was invited to apply to direct a mainstage production. When I first read *Marisol*, I knew I wanted to direct it here. Its characters are deep and complicated; its poetic language is beautiful and rich; its fantastical scenarios are other-worldly; and yet still, José Rivera's central message seems to me to radiate like a Golden Crown: when our lives are threatened by powers above us, it is our responsibility to band together in community and restore peace and justice through fearless revolution.

But community is more than neighbors who will tolerate loud music or friends who like to interact with our social media posts. Community is a coupling of empathies; it is consciousness in partnership; it is humanity. In the simplest of terms, *Marisol* is a play about humans. Rivera challenges us (as artists and audience members alike) to enter a world alien to our own: a world where things that happen to other people happen to us.

I thank you for attending the show this evening, and I invite you to picture yourself in the shoes of each of the characters. Be in community. Be fearless. Be human.

MONMOUTH COLLEGE THEATRE
PRESENTS

MARISOL

By José Rivera

Directed by Edrass Chávez-Alvarado '26

September 26th-28th, 2025

Friday & Saturday @ 7:30pm | Sunday @ 2pm

Hewes Studio Theater

This production will last approximately 2 hours with
one 15-minute intermission

Please silence all electronics.
Restrooms and drinking fountains
are located in the lobby.
Photography and recording of any kind
is prohibited.

Marisol is presented with a special arrangement by
Dramatists Play Service

Content Warning: *Marisol* contains discussions and depictions of violent and traumatic moments, including sexual assault, gun violence (including the use of prop guns), warfare, attacks on the homeless, and stillbirth. Strong language (including racial slurs) and radical religious themes are expressed. All moments of intimacy and violence in the production have been carefully created and choreographed by the director, according to industry best practices, and with the actors' safety in mind.

THE PLACE

New York City

THE TIME

Sometime in a winter before the turn of the century

THE CAST

ANGEL	Maya Blackmon
MARISOL	Calista Lythgoe*
SUBWAY ANNOUNCER VOICE #2 HOMELESS PERSON	Bella Moore*
MAN WITH GOLF CLUB VOICE #3 MAN WITH ICE CREAM MAN WITH SCAR TISSUE	Ivy Johnson*
VOICE #1 HOMELESS PERSON	Lorenzo Ramirez
RADIO VOICE WOMAN WITH FURS	Emma Heiser*
JUNE	Nyx King
LENNY	Eric Pio*
HOMELESS PERSON	Maylee Huffman

* Denotes a Member of Alpha Psi Omega (Theatre Honor Society)

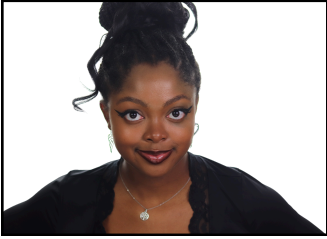
THE CREATIVE TEAM

DIRECTOR	Edrass Chávez-Alvarado
STAGE MANAGER	Ryan Ullrich
SM MENTOR	Calista Lythgoe
SCENIC DESIGNERS	Vanessa Campagna & IV Johnson
TECHNICAL DIRECTORS	Vanessa Campagna & Ryan Ullrich
SCENIC CONSTRUCTION	Anthony Arambula, Canedance Baxter, Ivaníel Hernández, Emily Pérez-Castillo, Sebastian Pérez, Christian Witte
PROPERTIES DESIGNER	Eric Pio
LIGHTING DESIGNER	Payton Lamb
SOUND DESIGNER	Abby Zayas
COSTUME DESIGNERS	Vanessa Campagna & Calista Lythgoe
ANGEL WING DESIGNERS	Edrass Chávez-Alvarado & Calista Lythgoe
WARDROBE CREW	Anthony Arambula, Ivaníel Hernández, Emily Pérez-Castillo, Christian Witte
MAKEUP DESIGNER	Delaney Fredricksen
MAKEUP ASSISTANT	Esme Caballero
DRAMATURGY	Cassandra Nolasco & Abby Zayas
ASSISTANT DRAMATURG	Karla Ramirez
POSTER & PROGRAM DESIGN	Ray Shaul
HEADSHOT PHOTOGRAPHY	Ray Shaul
LOGO DESIGN	Grace Cornelius
HOUSE MANAGER	Ray Shaul

SPECIAL THANKS

Carmen Alvarado & Jaime Rivera
President Patricia Draves & Dr. Jeff Draves
Sarah Henderson
Kent Kriegshauser
Peter Rule
Emeril Stark
Patrick Weaver
Dean Mark Willhardt

CAST / CREW BIOS



MAYA BLACKMON

Maya Blackmon (Angel) is a junior Educational Studies major from Chicago, Illinois. This production marks her Monmouth College Theatre debut. She currently serves as rhythm guitarist for the Monmouth College Jazz Band and can often be found playing guitar on the campus quad in her free time.



CALISTA LYTHGOE

Calista Lythgoe (Marisol) is a senior Theater major and Art minor from Boulder, Colorado. Previous Monmouth College Theater credits include Charlotte Lucas in *Pride and Prejudice*, Catherine in *The Theory of Relativity*, Claire in *Proof*, Twin 2 and Stage Manager for *Peter Pan*, and a Stage Manager for *Sylvia*. Calista is also the president of AΨΩ, the theater honor society.



BELLA MOORE

Bella Moore (Subway Announcer, 2nd Voice) is a sophomore Biochemistry major from Morton, Illinois. Previous Monmouth College Theater credits include Anne DeBourgh in *Pride and Prejudice*, Emily in *Love/Sick*, and a Mouse in *Cinderella*. Other Monmouth College activities include Red Hot Scots, Chorale, Chamber, Color Guard, and AΨΩ.



IVY JOHNSON

Ivy Johnson (Various Men with All Sorts of Things) is a junior Environmental Studies and Sustainability major from Galesburg, IL. Previous Monmouth College Theatre credits include Assistant Technical Director in *Cinderella*, Assistant Stage Manager for *Pride and Prejudice*, and all sorts of other stuff! Other Monmouth College activities include hunting ghosts, climbing trees, and staring at the fake tree by the football field.



LORENZO RAMIREZ

Lorenzo Ramirez (Voice 1, Homeless Person) is a senior Music Education major from Waukegan, IL. This is his first Monmouth College Theatre production. Other Monmouth College activities include Wind Ensemble, Jazz band, Marching Band, Pep Band, Chorale, Sigma Phi Epsilon, Residence Life, and TARTANS.



EMMA HEISER

Emma Heiser (Radio Voice, Woman with Furs) is a junior Secondary English Education major and Theatre Minor from Marseilles, Illinois. Previous Monmouth College Theater credits include Kitty Bennet in *Pride & Prejudice*, Sarah in *Love/Sick*, an ASM in *Sylvia*, and a Mouse in *Cinderella*. Other Monmouth College activities include Chorale, Chamber Choir, TARTANS, and the Communications Director of AΨΩ. Emma would like to thank her friends and professors for encouraging her to pursue theatre arts.

CAST / CREW BIOS



NYX KING

Nyx King (June) is a freshman Theatre major from Rock Island, Illinois. This is Nyx's first production at Monmouth. Other Monmouth College activities include Chorale. Nyx would like to thank their cousin, Isabel, for help practicing lines as well as the director, Edrass, for giving them the opportunity to be in this show.



ERIC PIO

Eric Pio (Lenny) is a senior Art and Theatre major from Galesburg, Illinois. Previous Monmouth College Theatre credits include Chef Louis in *The Little Mermaid*, George in *The Language Archive*, and Mr. Darcy in *Pride and Prejudice*. Other Monmouth College activities include serving as an RA for Peterson Hall and helping as a member of AΨΩ.



MAYLEE HUFFMAN

Maylee Huffman (Homeless Person) is a freshman Music and Theatre major from Farmington, Illinois. This is Maylee's first theatre production at Monmouth College. Other Monmouth College activities include Chorale, Marching Band, Highland Harmonizers, and Wind Ensemble. Maylee would like to thank her family for always supporting her through all her theater productions.



RYAN ULLRICH

Ryan Ullrich (Stage Manager) is a senior Social Studies Education major from Galesburg, IL. Previous Monmouth College Theatre credits include technical work for shows like *Love/Sick*, *Sylvia*, and *Cinderella*. Other Monmouth College activities include TARTANS, as well as AΨΩ. Ryan would like to thank his friends and family for supporting him, Obi for reminding him to get a haircut, and most importantly, both Edrass and Calista for helping and mentoring him through the production.

THE 25-26 SEASON



MARISOL

SEPTEMBER 26TH-28TH



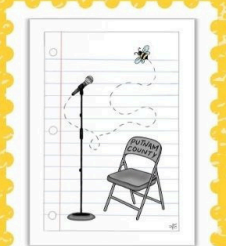
OUR TOWN

NOVEMBER 21ST-23RD



breaking ground

FEBRUARY 20TH-22ND



THE 24TH ANNUAL PUTNAM COUNTY SPELLING BEE

APRIL 17TH-19TH

DRAMATURG'S NOTE

Abby Zayas '27

As someone raised a Christian, many of the themes and ideas presented in *Marisol* were familiar upon initial reading, but further research into the show only brought more of José Rivera's knowledge to light. I am not Catholic, the religion much of the imagery is drawn from, but many stories and ideas persist across sects: from the existence of angels to the presence of salt, *Marisol* is steeped in Christian ideas that will ring familiar to anyone raised going to church. The role of dramaturg, however, is to step back and take a holistic approach to a story. Our job is to delve into the themes, imagery, language, etc., of a play and help round out the perspective of both the cast and crew, and the eventual audience. Through this, I researched religious iconography such as crucifixes, and others that do not arise from Christianity; rabbit's feet and horseshoes, the use of chicken's blood, and medicine bundles. Amidst all the salt and vengeful angels, the virgin births and sibling violence, Rivera still provides a window not only into Christian belief, but American belief as a whole. He presents it as the diverse and nebulous entity it has always been: many religions, many ideas, and many dreams all colliding together at once to create something wholly new.

**The dramaturgical display in the lobby was designed by Cassandra Nolasco '26*